



LEA perspective on qualifying for CTE Funding

- **Steve Turner**
*Director of Maintenance, Grounds,
Operations & Transportation
Ukiah Unified School District*



background

- Many strong existing programs + Undeveloped and potential programs
- Significant faculty turnover
- Many facilities renovated prior to Prop 1D
- Historic program funding expectations
- Dynamic partnerships
- CTE grant opportunities/requirements



formed a district level CTE Advisory Committee

- Establish District Leadership
- ID existing and proposed programs
- Develop district-wide goals
- Formalize feeder school relationships
- Require industrial & educational partnerships
- Coordinate programs, funds and grants

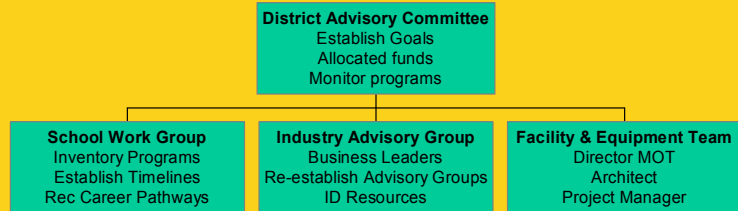


district advisory membership

- | | |
|-----------------------------------|--------------------------------|
| • Asst. Superintendent Curriculum | • Continuation HS Principal |
| • HS Principal & AP | • Vice President local bank |
| • HS Voc Dept Chair | • Manager Industrial Supply Co |
| • HS Ind. Study Teacher | • Grape grower |
| • Adult School Principal | • ROP Director |
| • Middle Sch. Principals | • Director MOT |
| • HS Work Exp Teacher | |



district advisory subcommittees



UUSD strategy

- For existing as well as proposed programs:
 - Look at renovation needs
 - Look at equipment needs
 - No new construction is planned



examples existing & proposed programs

- **Existing**
 - Agriculture
 - Construction trades
 - Welding
- **Possible**
 - Child Development
 - Scrubs
 - Culinary Arts



determine preliminary needs

- Agriculture
- Construction trades
- Welding
- Child Development
- Scrubs
- Culinary Arts
- Need barn
- OK
- Have new shop, need new equipment
- Modify toilet rooms & observation area
- Need sinks and equipment
- Need teaching kitchen



ID industry & business partners sources of advisory group members

- MESA advisory group
- Chamber of Commerce
- Employer's Council
- Farm Bureau
- Cultural Arts Groups
- Medical Groups / Hospital
- State Preschool Consortium



program advisory groups

- Sounding board for community & state CTE needs
- Practical experience in programs, facilities & equipment
- Must record minutes to support grant application
- Sources of community and financial support
- Will be new area of program/teacher evaluation



ID educational partners

- Middle & High Schools
- Community Colleges
- Adult School
- ROP / COE
- University Extension
- State Universities
- Hospitals



pathways & sequencing

- Focus programs and proposals to comply with state pathways
- Determine sequencing opportunities possible with partners
- Gauge community interest in advisory group
- Estimate student participation and benefits
- Draft application for programs most likely to succeed
- Refine equipment and facility needs



examples of sequencing

Middle School	High School	Community College	Employment
Life Skills	Child Development	Child Dev Preschool Teacher prep	Preschool Day Care Teaching Pediatrics



more sequencing

- Middle School gardening





sequencing

- Middle School
- High School
 - Agriculture
 - Horticulture
 - Husbandry



sequencing

- Middle School
- High School
- Community College
 - Propagation
 - Viticulture
 - Agribusiness





sequencing

- Middle School
- High School
- Community College
- Employment



ed spec = construction spec

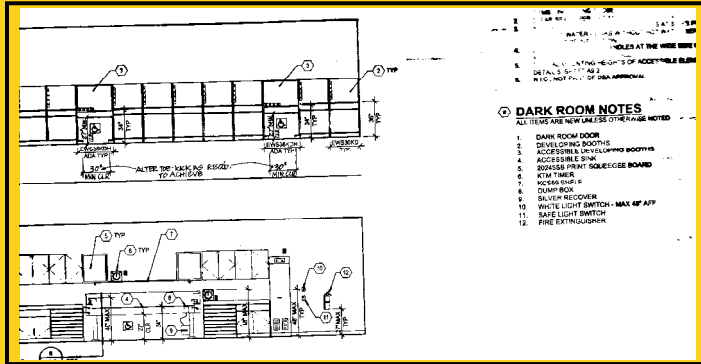
Specifications describes facility and specific equipment needs: Darkroom Specification

Ukiah High School Modernization - Phase 2 Project No.: 660.00 660.00
SECTION 11470 DARKROOM EQUIPMENT
PART 1 GENERAL 1.01 SECTION INCLUDES A. Darkroom Cabinets, including accessible workstations. B. Racks, Drying Equipment and related items.
1.02 RELATED SECTIONS A. Section 07900 - Joint Sealers. B. Section 11476 - Revolving Darkroom Doors.



ed spec = construction spec

Drawings show layouts and locations of equipment



Cost can be isolated in add alternates or schedule of values



ed spec: facilities & equip examples

Welding stands





ed spec: facilities & equip examples

Welding stands
Flash protection booth



ed spec: facilities & equip examples

Welding stands
Flash protection booth
Ventilation





ed spec: facilities & equip examples

- Welding stands
- Flash protection booth
- Ventilation
- Adequate power



ed spec: facilities & equip examples

- Welding stands
- Flash protection booth
- Ventilation
- Adequate power
- Welder





final application includes:

- CTE plan
- Advisory Committee membership
- Statement of commitment
- Describe
 - Certification
 - Address standards
 - Sequencing
 - Career pathways
- Enrollment projections and follow-up
- Feeder Schools and partners
- Accountability
- Ed Spec
- Budget
- Unique conditions



find opportunities

- Sharing facilities – drafting & welding labs
- Renting facilities – local match
- Collaboration – HS provides shop, ROP provides teacher-seamless partnerships
- Multiple uses of facilities– drafting and art
- Planning supports sequencing- work benches



facilities leadership challenge

In this endeavor facility leaders are partners with

- Faculty
- Industry advisory groups
- Sequencing institutions
- Design professionals

in articulating the vision of CTE to secure the funding necessary to create facilities optimized to support those programs.

The student's education will be more complete due to your efforts.

Machine Technology



Drafting / CAD-CAM



Small Engine Repair & Automotive



Agriculture

Thank you

