

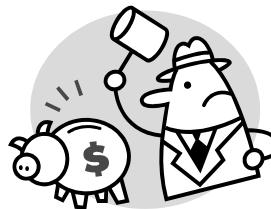
What Should School Districts Be Doing To Cope?



Guy Mehula
LAUSD Chief Facilities Executive
CASH Conference
May 22, 2009

Facilities General Fund Budget Cuts

- \$96.4 Million
 - 20%-30% Overall
- Reductions
 - 892 Positions
 - \$45 Million Maintenance
 - \$43 Million Operations
 - \$8 Million Support
- Reduces Repair Funding Floor From 2.5% To 2%
- Deferred Maintenance Program \$55 Million

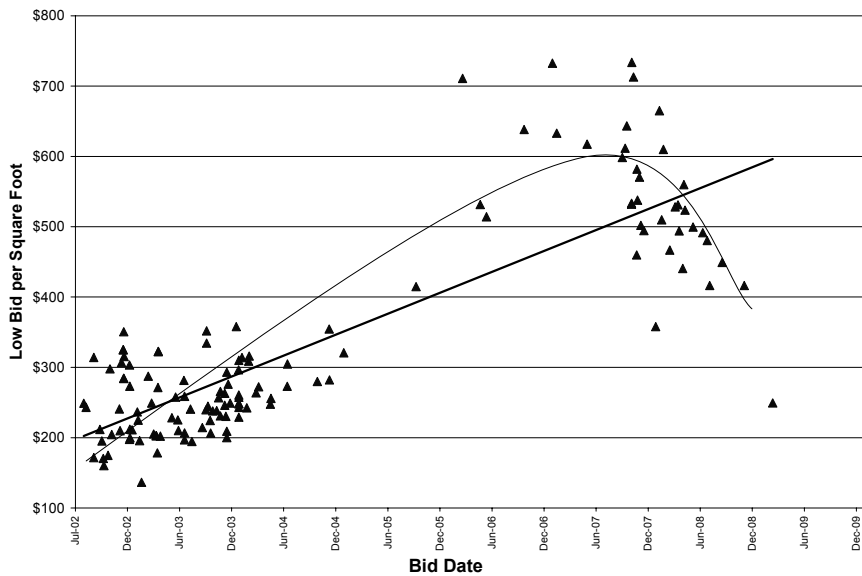


HOW TO COPE ???



Identify Opportunities In A Crisis

Construction Market Stabilizing



Never let a Good Crisis go to Waste

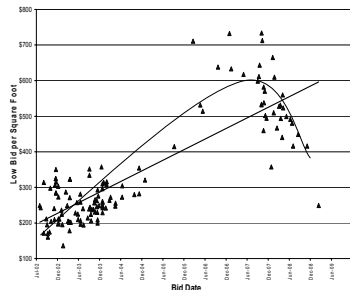
- Market Opportunities
- Low Cost Opportunities
- Organizational Opportunities
- Manage the “Churn”



Find Things You Always Wanted to-do

Market Opportunities

- Capital Projects
 - Expedite Contract Awards
 - Construct Now – Buy Later with 17406
- Renewable Energy Projects
 - Financing Opportunities
- Consolidate Leases
 - Renegotiate Leases



Low Cost Opportunities

- Re-Energize the Energy Conservation Program
- Custodial Worker Schedules
- Consolidate Vendors
 - Renegotiate terms
- Volunteer Program
 - Trash Pick-up, Gardening, Beautification
 - Avoid Painting, construction, ...



Organizational Opportunities

- Re-Organization
 - Regionalization
- Redefine Job Classifications
- Shape Work-force
 - Early retirement
 - Apprentices Program
- Charter Support
 - Contract

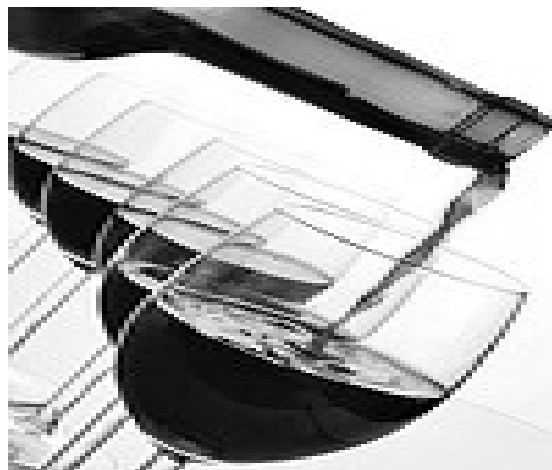


Manage the “CHURN”

- Communications-Communications-Communications
 - Meetings with entire staff
- Small Capital Projects
 - Saved Tradesman jobs
- Cross Training
 - Gardeners, maintenance workers
- Manage Expectation
 - Priority lists from Principals



HOW TO CONTINUE TO COPE ??



Questions??????

