



# REGISTER

Volume XXIV, No. 1

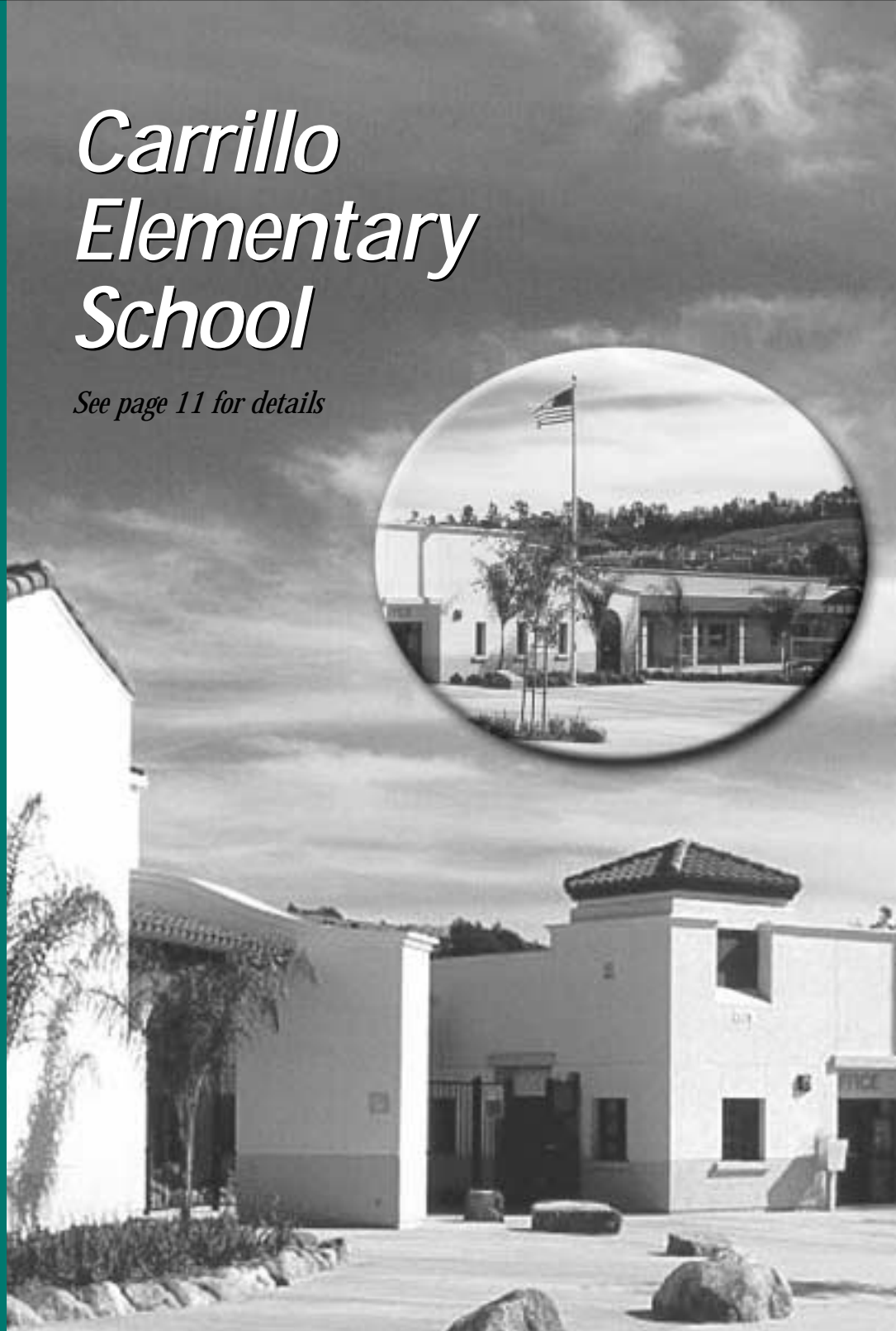
THE NEWSLETTER OF THE COALITION FOR ADEQUATE SCHOOL HOUSING

## *In This Issue...*

- 2 ▶ **Message From The Chair**
- 3 ▶ **Contributors to the 2004 Statewide Bond Campaign**
- 3 ▶ **Storm Water Regulations Removed from SWRCB Hearing Agenda**
- 5 ▶ **Energy Funding and Assistance Available for Central Valley School Districts**
- 8 ▶ **ACCM Members Achieve 100% Bond Support**
- 8 ▶ **The Association of California Construction Managers Produce CD to Help School Districts with RFQ/RFP Process**
- 9 ▶ **State Allocation Board Actions**
- 10 ▶ **K-12 and Community Colleges Confer on Building Educational Facilities**
- 11 ▶ **Carrillo Elementary School**
- 23 ▶ **C.A.S.H. Monthly Meeting Minutes**
- 24 ▶ **C.A.S.H. Meetings, Conferences & Workshops**

## *Carrillo Elementary School*

*See page 11 for details*



# Message From The Chair



*Kathleen Moore Baratta, C.A.S.H. Chair*

In the movie *Patton*, George C. Scott, as General Patton, gives a poignant speech in which he states that the "individuality stuff written about the Army, in the *Saturday Evening Post*, is a bunch of crap...An army is a team, it works as a team, eats as a team, sleeps as a team and fights as a team." In other words all important accomplishments are the result of a team effort. C.A.S.H. has accomplished much over the last two years exactly because of a

team effort between the C.A.S.H. Board, the C.A.S.H. membership and the C.A.S.H. staff.

It has been an honor and a challenge to be the C.A.S.H. Chair. When I took office in February 2001, I had three specific goals: 1) to continue to expand our member services so that we build a strong coalition of interests, 2) to effectively lobby the Legislature for bonds in the amount necessary to compliment local revenue to build and modernize schools, and 3) to improve the site acquisition process for all districts impacted by toxic issues. These goals were always in my mind as decisions were debated and made during the last two years.

I am proud to be part of a legacy that includes the largest school facilities bond in our State's history. The November 2002 \$13.05 billion bond measure could not have been possible without the work of so many people both in the legislative leadership and in the C.A.S.H. organization, particularly our C.A.S.H. lobbyist, Tom Duffy.

I am proud, too, that C.A.S.H. was successful, particularly through the

work of our lobbyist, Ernie Silva, on Assembly Bill 14, in increasing the amount of state funds that will be available for both environmental review and toxic cleanup. C.A.S.H. continues to meet with DTSC and the California Department of Education informally to build a positive relationship and brainstorm ways to streamline the toxic review process.

Member services continue to grow under the tutelage of Greg Golik and the C.A.S.H. staff. The annual conference each year is better than the last. We had a particularly smooth transition to the Sacramento Convention Center in 2002 due to the fine work of the Annual Conference Planning Committee, chaired by Eric J. Hall and administered by Greg Golik and C.A.S.H. staff. I look forward to an excellent conference this year. Even in this time of budget cuts and constraints it is important for school districts to have the most current information to secure state funding and build quality schools.

The deaths of Jim Murdoch and Leroy Greene were particularly difficult times for C.A.S.H. during my term. We mourn their passing and honor their memories and legacies. I am grateful for having known both and for having the opportunity to work with Jim and benefit from his tremendous knowledge and experience.

Thank you all for your support these past few years. I have enjoyed working with so many of you and value your friendship, professionalism, expertise and passion. I look forward to joining the ranks of past Chairs, all of whom I admire. I eagerly turn the gavel to Eric J. Hall, who I know will lead this organization to greater heights.

C.A.S.H. is a team effort and I am proud to have served the organization.



## REGISTER

Volume XXIV, Number 1  
January, 2003

© 2003 The Coalition for Adequate School Housing

ISSN: 1081-9088

Publisher: Coalition for Adequate School Housing • Editor: Greg Golik

The CASH Register is published eleven times a year (January through November) by the Coalition for Adequate School Housing (C.A.S.H.) and distributed to C.A.S.H. members. Over 1,000 rapidly growing school districts, county offices of education, architects, attorneys, bond counsel, financial institutions, developers, contractors, consultants, inspectors, licensed professionals, manufacturers of portable classrooms, maintenance suppliers and others who are concerned about school construction issues hold C.A.S.H. memberships.

The CASH Register solicits articles on school facility-related topics from the membership. If you are interested in submitting an article, please send it or a letter of inquiry to: Editor, CASH Register editorial office, 1130 K Street - Suite 210, Sacramento, CA 95814. Sorry, we are unable to return or acknowledge unpublished manuscripts. The views expressed herein are those of the authors and not necessarily those of the Coalition for Adequate School Housing, its board, staff or general membership.

# Contributors to the 2004 Statewide Bond Campaign (as of 1/30/03)

The C.A.S.H. Board of Directors thanks the following members who have made generous contributions to our fundraising efforts for the 2004 Statewide School Bond Campaign. The Board encourages all members to make a generous contribution to our efforts when asked to do so by members of the C.A.S.H. Fundraising Committee. If you or your firm would like to make a contribution, please click on the link below.

## **Platinum Plus \$15,000 +**

Douglas E. Barnhart Inc.  
HMC Architects  
Murdoch Walrath & Holmes  
School Facility Consultants  
Virco Mfg. Corporation  
Williams Scotsman  
WLC Architects

## **Platinum Level \$10,000 to \$14,999**

**Gold Level  
\$5,000 to \$9,999**  
Frick, Frick & Jetté Architects

**Silver Level  
\$1,000 to \$4,999**  
Current Enterprises Inc.  
Kruger Bensen Ziemer Architects Inc.

**Contributor Level  
\$999 or less**  
Jeffrey Baratta  
Kathleen Moore Baratta  
Terry Bradley  
Denise Clendening  
Bill Cornelison  
Dave Doomey  
Tom Duffy  
Dennis Dunston  
Sherry & John Gongaware  
Eric J. Hall  
Gene & Lynn Hartline

Robert Hensley  
Pamela Johnson  
William Lucas  
Gary Mekeel  
Ron Pregmon  
Ted Rozzi  
Dane Ruddell  
Bill Savidge  
Jamie Schut  
Ernest Silva  
Mamie Starr  
Linda Sweaney  
Arturo Taboada  
Carl Thorsted  
Dave Walrath  
Nina Young

### **Proposition 47 Contributor Correction**

C.A.S.H. would like to thank Gordon H Chong & Partners for their Silver Level contribution and RBC Dain Raucher for the Platinum Level contribution to the Proposition 47 campaign. These firms were inadvertently left off the contributor list in the October 2002 issue of the *CASH Register*. •

## **Storm Water Regulations Removed from SWRCB Hearing Agenda**


As you will recall, C.A.S.H. and its members have been working with the State Water Resources Control Board (SWRCB) to ensure that the proposed Small MS4 General Permit does not delay or prohibit school construction projects from proceeding. Though letters and testimony at the SWRCB hearings, C.A.S.H. has requested that school construction projects in the "pipeline" be exempt from the proposed regulations, and that school districts be given a one-year extension to comply with the Permit.

In response to the concern of school districts, the SWRCB has made changes to the proposed permit which benefits

school districts. Specifically, SWRCB staff added the following language to the permit: "...the permit does not require the redesign of school facilities that have been submitted to the Department of General Services, Division of the State Architect before adoption of this permit, and which receive final approval from the Department of Education by December 31, 2004."

We have been informed, however, that as a result of a recent Ninth Circuit Court of Appeals ruling, the SWRCB has directed its staff to withhold presenting the Phase II Small MS4 General Permit to the Board for consideration of adoption on February

4, 2003. The SWRCB is in the process of reviewing the ruling and its applicability to the draft Small MS4 General Permit, and is currently consulting with USEPA for guidance on how they should proceed. A new hearing date has not yet been set.

C.A.S.H. will continue to update members on the most recent developments concerning this issue. If you have questions, please contact Jarma Bennett at (916) 351-5532, Pamela Barksdale, Chief of the Municipal Storm Water Unit at (916) 341-5280, or Bruce Fujimoto, Chief of the Storm Water Section at (916) 341-5523. 

- Ian Padilla

COALITION FOR ADEQUATE SCHOOL HOUSING

---

**ISSUES COMMITTEE**

FPPC I. D. No. 980-478

---

**Contribution Request Form**

Please take a moment and contribute to the Coalition for Adequate School Housing Issues Committee.

Contributor Name: \_\_\_\_\_

Contributor Contact Name: \_\_\_\_\_

Street Address: \_\_\_\_\_

City, State Zip: \_\_\_\_\_

Phone Number: \_\_\_\_\_

Fax Number: \_\_\_\_\_

If Contributor is an individual, please include:

Occupation: \_\_\_\_\_

Employer: \_\_\_\_\_

To contribute by credit card, please provide the following information:

Contribution Amount: \_\_\_\_\_

Cardholder: \_\_\_\_\_

Card Number: \_\_\_\_\_

Visa     MasterCard    Signature: \_\_\_\_\_

Expiration Date: \_\_\_\_\_

Otherwise, please include a check to be deposited and mail or messenger to:

Coalition for Adequate School Housing Issues Committee  
Steven S. Lucas, Treasurer  
591 Redwood Highway, No. 4000  
Mill Valley, CA 94941  
(415) 389-6800

***To expedite recognition for your contribution on the C.A.S.H. web site, in the CASH Register, at C.A.S.H. meetings and other functions, please fax a copy of this form to the C.A.S.H. office at (916) 448-7495.***

Contributions to the Coalition for Adequate School Housing Issues Committee are not deductible as charitable contributions for federal income tax purposes. Moreover, contributions are for the purpose of influencing voters on ballot measures and are regarded as payments for "grassroots lobbying" which are not deductible as a business expense (IRS Regulation 1.162-20 [b], [c]). Contributions from foreign principals may not be accepted.

# Energy Funding and Assistance Available for Central Valley School Districts

***The State and Consumer Services Agency (SCSA) was recently awarded a \$4.5 million grant from the California Public Utilities Commission (CPUC) to develop and implement the School Energy Efficiency (SEE) Program – a comprehensive energy education and facility improvement project for Central Valley school districts.***

The SEE Program is comprised of two key components: (1) classroom, professional development, and service learning activities designed to educate students, teachers, and school officials about energy efficiency and (2) school facility improvement efforts designed to provide facility operators and administrators with technical assistance, financing options, demonstration technology, and operation and maintenance training. The program will deliver these services to 55 school districts in the Central Valley counties of Tulare, Stanislaus, San Joaquin, Merced, Madera, Fresno, Kern and Kings. Mariposa, Yolo, and El Dorado counties may be included in the program as well pending approval by the CPUC. The SEE Program activities are scheduled to start in February 2003 and continue through March 2004.

In the education arena, the SEE Program will:

- Teach students about energy

efficiency through energy patrols, energy audits, and project-based learning.

- Support the efforts of the School Diversion and Environmental Education Law to integrate energy, air, water, and waste education activities into student learning of traditional subjects.
- Sponsor Unified Education Strategy Grants to provide funding, educational materials, and technical support to districts (information at [www.ciwmb.ca.gov/Schools/Grants/FY200203](http://www.ciwmb.ca.gov/Schools/Grants/FY200203))
- Sponsor teacher professional development workshops on energy and environmental education.
- Promote the energy efficiency lessons that students have learned in the classroom to assist their families and communities in reducing energy consumption.
- Recommend California content standards-based energy education resources that complement the schools' curriculum plan, needs, and budget.
- Link classroom learning activities to school-site energy-related facility improvements – “using the school site as a teaching tool”.

In the facility improvement arena, the SEE Program will:

- Train operations and maintenance staff on energy efficient technologies and building practices that reduce energy use.
- Benchmark and track the energy use of district buildings to priori-

tize energy-efficiency investments.

- Provide comprehensive building energy audits and develop energy efficient retrofit projects.
- Assist in the development of a comprehensive “open” database of products, materials, resources, and best practices for schools.
- Encourage school districts to participate in photovoltaic, solar tube, and other renewable energy rebate/incentive programs.
- Develop demonstration projects to showcase the installation, operation, and maintenance of various energy efficient technologies.

## ***Partnerships***

The SEE Program is built on partnerships with numerous public and private sector entities. These organizations will work collaboratively with the SCSA to deliver the program's educational and facility improvement elements. Among others, SEE Program partners include: the U.S. Environmental Protection Agency, the California Energy Commission, the California Department of Education, the California Integrated Waste Management Board, the California Arts Council, the Department of Conservation, the Division of the State Architect, the Office of Public School Construction, and the Collaborative for High Performance Schools. The following provides a brief description of partnership activities.

**U.S. EPA:** The SCSA and the U.S.EPA have established a strong working relationship. One of the key

*Continued on page 6*

## **Energy Funding and Assistance**

*Continued from page 5*

elements of this partnership is to provide schools with the necessary tools to analyze energy use and identify facilities that present the best opportunity and highest rate of return for retrofit activities. The SCSA partnership with the U.S. EPA will involve Energy Star benchmarking activities, access to Energy Star business partners, and technical assistance related to demonstration projects.

**Collaborative for High Performance Schools (CHPS):** CHPS is a partnership of local and state government agencies, utilities, and non-profit organizations formed under the unifying goal of facilitating the design of schools that are not only energy efficient, but also healthy, comfortable, well-lit places for California's kids to obtain a quality education. CHPS membership includes, among others, Pacific Gas and Electric,

Southern California Edison, San Diego Gas and Electric, Sacramento Municipal Utilities District, the California Energy Commission, the California Integrated Waste Management Board, the Division of the State Architect, the Office of Public School Construction, and the California Department of Education.

CHPS aims to increase performance of California schools by providing information, services and incentive programs directly to school districts and design teams. CHPS has developed eligibility criteria to facilitate and streamline the design process, a Best Practices Manual, training programs, and other energy efficient design resources. These CHPS products have been the foundation for several new schools resource guides developed by

the federal government and other states. Additionally, various CHPS members have provided funding to establish demonstration high performance schools throughout the state.

The SCSA partnership with CHPS will involve expanding their training programs and developing additional energy efficient school demonstration projects in the Central Valley. In particular, the SEE Program will collaborate with CHPS to develop an operations and maintenance manual for facility operators that will be incorporated into the various SEE Program facility improvement activities.

*This program will engage students and teachers, and also involve community and local government entities.*

**California Arts Council (CAC):** The SCSA and the CAC have developed an Energy Education and the Arts grant program that will reach all SEE Program counties. This program will engage students and teachers, and also involve community and local government entities. Specifically, the Energy Education

and the Arts program will award small grants to State/Local Arts Council Partners within the Central Valley. These arts organizations and/or artists would then work with individual school districts or schools to implement standards based activities in the arts focusing on energy efficiency and conservation. Overall, the program offers an opportunity for artists in various disciplines (i.e. visual arts, theatre, dance, music, literature, media arts) to develop creative approaches to promote energy conservation and energy efficiency among K-12 students. Through this partnership, the SCSA will also seek to establish energy efficiency demonstration projects, exhibitions, and programs at Central Valley museums, science centers, and arts events.

**California Integrated Waste Management Board (CIWMB):** SB 373 Implementation Activities: SB 373 (Chapter 926, Statutes of 2001), the School Diversion and Environmental Education Law, establishes a series of landmark changes in the area of environmental education. Among other things, the law requires the development of a unified education strategy to integrate environmental education into standards based K-12 curriculum. This means that energy, water, waste, and air issues will become an integral part of the way students are taught math, science, language arts, and other traditional subjects. Two key SB 373 activities that the SEE Program will partner on are the:

**Environmental Ambassador Pilot Program:** Eight school districts, including Fresno Unified School District, were selected to participate in and receive an Environmental Ambassador Pilot Program (EAPP) grant. These schools districts were selected for their ability to serve as model energy and environmental education programs to other school districts throughout the state. The SEE Program will fund the Fresno EAPP grant.

**Unified Education Strategy Grants.** The UES program is designed to provide grant funding, educational materials, professional development opportunities, and technical support to school districts starting to work in the energy and environmental education arena. The UES program will focus on sixth grade programs and will be organized around: Resource Audits, Environmental Education Planning and Program Implementation. UES grant applications are due in February 2003 and the CIWMB plans to fund 15 grantees (application information can be found at [www.ciwmb.ca.gov/Schools/Grants/FY200203](http://www.ciwmb.ca.gov/Schools/Grants/FY200203)). The SCSA,

through its outreach efforts, is working to ensure that a high number of Central Valley school districts apply for the UES grants and will fund several grantess.

**California Energy Commission (CEC):** The CEC administers the Bright Schools Program and the Energy Quest website. Each will play a significant role in the SEE program delivery system. The Bright Schools Program offers specific technical assistance services to help school districts become more energy conscious (e.g. identifying cost-effective energy-efficient systems and providing design and implementation assistance.) The Energy Quest website is an extensive interactive resource for students and teachers. It includes curriculum lessons and links to various energy education websites. The SEE Program partnership will expand the efforts of the CEC through these two activities in the Central Valley.

**California Department of Education (CDE):** The SCSA's partnership with the CDE is a fundamental component of the SEE Program. This partnership involves the CDE's California Regional Environmental Education Community Network (CREEC). The mission of the CREEC Network is to serve as a conduit between educators and providers of high quality environmental education materials and resources to enhance the environmental literacy of students statewide. The SCSA will also work with two additional CDE programs, the California After School Partnership and the American Indian Education Office.

### **Demonstration Projects**

An equally important aspect of the SEE Program is the development of energy efficiency demonstration projects. These projects will serve to expose district operations staff, administrators, and educators to energy efficient technologies and applications that the district might not otherwise consider for their projects. The demonstra-

tion projects will also become training tools for the host district and other local districts interested in learning about new energy-efficient technologies and function as educational opportunities for students. An example of SEE Program demonstration projects involves our work with Fresno Unified School District (FUSD).


**Wawona Middle School:** The SCSA recently worked with the FUSD to develop a demonstration project at Wawona Middle School. While the rest of Wawona had been recently modernized, its multi-purpose room still used incandescent lighting with recessed cans to illuminate the room's 4,083 square foot space. Wawona's multi-purpose room is used by the entire student body and faculty for assemblies, stage productions, recitals, and staff meetings, and is also widely used by the surrounding community for events and meetings. Through this project, the multi-purpose room was outfitted with new high performance electronic fixtures that meet Energy Star guidelines, and a motion control system.

The students at Wawona undertook a before-and-after comparison study on the project that involved collecting data on variables such as temperature and light levels, and conducting surveys on personal comfort and the effectiveness of lighting for various activities. Due to the extensive use of Wawona's multipurpose room, almost everyone in the school has become aware of the improvements an upgraded lighting system can make. Not only has the lighting quality increased, but the overall aesthetics of the space has dramatically improved as well. Overall, this demonstration project is expected to yield 79% energy savings, with an

associated cost savings of \$3,448 per year. The results of this project analysis work will be entered into the county science fair. Feedback from the district – including the Manager of Environmental Services, Wawona's principal, and maintenance and operations staff – has been very positive.

Not only do demonstration projects like these showcase the economic advantages of improving energy efficiency, but they also provide teachers with a more effective learning tool for educating their students about energy efficiency. With the coordination of facilities managers, teachers, and students, demonstration projects like Wawona Middle School will be constructed in several school districts throughout the Central Valley.

### **CASH Conference**

At the Coalition for Adequate School Housing (CASH) Conference, the SCSA will participate in a workshop entitled, "That Sounds Cool, What is It? Emerging Energy Conservation Technologies." SCSA Deputy Secretary Arnold Sowell, who chairs the Governor's Task Force on Sustainable Building and directs SEE Program activities, will discuss the educational benefits of coordinating classroom education activities with facility improvement opportunities. 

For more information regarding the SEE Program please contact:

Claudie Kiti, Assistant Secretary  
State and Consumer Services Agency  
(916) 653-2636 • [ckiti@scsa.ca.gov](mailto:ckiti@scsa.ca.gov)

or

Elva Raish, Program Manager  
(559) 799-1163 • [eraish@pacbell.net](mailto:eraish@pacbell.net)

*Among other things,  
the law requires the  
development of a  
unified education  
strategy to integrate  
environmental  
education into  
standards based  
K-12 curriculum.*

# ACCM Members Achieve 100% Bond Support

When C.A.S.H. began their Proposition 47 campaign last year, the Association of California Construction Managers Vice President, Rich Henry, challenged the members of ACCM to raise campaign funds. Well the ACCM members did just that! The ACCM membership raised \$90,392.00, with 100% participation.

ACCM members include the leadership of the construction management industry. Member firms provide education and support to school districts and construction managers alike. ACCM now includes 22 member firms.


**Platinum Level sponsors  
(\$10,000 or more) included:**  
C.W. Driver Contractors

Douglas E. Barnhart, Inc.  
Bovis Lend Lease, Inc.

**Gold Level sponsors  
(\$5,000 or more) included:**  
3D/International  
Bernard Bros. Construction Management  
FL Construction Management, Inc.  
Ledesma & Meyer Construction Company, Inc.  
McCarthy Building Companies  
Neff Construction, Inc.  
Roebbelen Construction Mgt., Inc.  
The Haskell Company  
Tilden-Coil Constructors, Inc.  
Vanir Construction Management, Inc.

**Silver Level sponsors  
(\$1,000 or more) included:**  
A. J. Diani Construction Company, Inc.

APM, Inc.  
EDGE Development, Inc.  
Erickson-Hall Construction Company  
Kitchell CEM  
Pacific Program Management, Inc.  
Paul C. Miller Construction Co., Inc.  
Tech 5 Corporation  
WLC Construction Services, Inc.

With the help of ACCM, C.A.S.H. was able to more than double the amount raised for the campaign. C.A.S.H. continues its efforts. C.A.S.H. is now gearing up for the March 2004 bond campaign. If you would like to be one of the first to be on the list of contributors for the March 2004 bond, please contact the C.A.S.H. office at (916) 448-8577. 

## The Association of California Construction Managers Produce CD to Help School Districts with RFQ/RFP Process

Over the last ten years Construction Management has become the dominant delivery method for K-12 school construction in California. The Association of California Construction Managers (ACCM) has assembled a standard Request for Qualifications/Proposals document in the belief that School Districts could benefit from a single source of information regarding this delivery method, especially in light of the scarcity of governmental guidelines and regulations.

The organization's focus during the development of these guidelines was the perceived need for a functional sample RFQ/RFP document that School Districts could use "as is" or as a basis for the development of their own document. Additionally, it has been anticipated that School Districts will approach the selection process differently. Accordingly, the sample document is structured in such a way as to allow for the qualification of candidates

through an RFQ process prior to the call for proposals.

Commentary has been provided to help School Districts to both better understand the selection process and to evaluate the responses they receive. Although ACCM has attempted to be inclusive and comprehensive in the development of these guidelines, there are undoubtedly differing approaches and perspectives which are not addressed in this document. It is not the intention of ACCM to endorse any specific approach or delivery method to the exclusion of another. Specifically, this document and the guidelines contained therein are not intended to favor or endorse the CM Multiple-Prime method of delivery over the CM General Contractor approach.


ACCM is sponsoring a booth at the C.A.S.H. Annual Conference Tradeshow in February, where they will have the Sample RFQ/RFP CDs available. Please stop by and meet with

the representatives of the construction management industry and pick up a CD to review.

It is ACCM's sincere desire that School Districts will find both the content and the interactive nature of this document to be useful and informative. We would welcome any comments or suggestions that you feel might serve to improve or clarify these guidelines.

### Acknowledgments

ACCM would like to express its appreciation to those individuals and firms who contributed their efforts to the development of this document by acknowledging the following:

- Jamie Schut, EDGE Development, Inc.
- Jack Moore, TECH 5 Corporation
- Brian Jaramillo, Tilden-Coil Constructors, Inc.
- Ed Mierau, Neff Construction, Inc.
- Layne Arthur, Douglas E. Barnhart, Inc.
- Caryn Cowin, Bovis Lend Lease 

State Allocation Board  
1130 K Street, Suite 400  
Sacramento, CA 95814  
(916) 445-3159  
(916) 322-0337 fax  
www.dgs.ca.gov.opsc/sab.htm

State Allocation Board Members

**Director of the Department of Finance  
Steve Peace (Chair)**

State Capitol Room 1145  
Sacramento, CA 95814-3700  
(916) 445-4141

**Interim Director of Department of  
General Services  
Clothilde Hewlett**

707 3<sup>rd</sup> Street, 8<sup>th</sup> Floor  
West Sacramento, CA 95605  
(916) 319-0800

**Superintendent of Public Instruction  
Jack O'Connell**

1430 N Street Suite 5602  
Sacramento, CA 95814  
(916) 445-2144

**Dede Alpert**

California State Senate  
State Capitol Room 5055  
Sacramento, CA 95814  
(916) 445-3952

**Bob Margett**

California State Senate  
State Capitol Room 3082  
Sacramento, CA 95814  
(916) 445-2848

**Tom Torlakson**

California State Senate  
State Capitol, Room 5061  
Sacramento, CA 95814  
(916) 445-6083

**John Dutra**

California State Assembly  
State Capitol, Room 3091  
Sacramento, CA 95814  
(916) 319-2020

**Marco Firebaugh**

California State Assembly  
State Capitol Room 319  
Sacramento, CA 95814  
(916) 319-2050

**Tony Strickland**

California State Assembly  
State Capitol Room 4098  
Sacramento, CA 95814  
(916) 319-2037

**David Sickler**

Southern Regional Director  
State Building & Construction Trades Council  
880 West First Street Suite 206  
Los Angeles, CA 90012  
(213) 680-2058

Staff:

**Luisa Park, Executive Officer**

(916) 445-3377  
lpark@dgs.ca.gov

**Bruce Hancock, Assistant Executive Officer**

(916) 445-3159  
bhancock@dgs.ca.gov

## State Allocation Board Actions

On Wednesday, January 22 the State Allocation Board (SAB) met to review two controversial proposals and to provide two resolutions in recognition of outstanding service to school districts and children. The two resolutions were one for Senator Leroy F. Greene, and one for James L. Murdoch, both of whom passed away last fall.

The two controversial issues were related to school district use of grants and the Department of Industrial Relations (DIR) approval of school district labor compliance programs.

### AB 1506

The SAB approved the proposed regulations and policies recommended by staff after a thorough discussion of DIR responsibilities and capabilities. Mr. Arthur Lujan, State Labor Commissioner, represented the Department of Industrial Relations and committed to rapid approval of school district labor compliance programs, flexibility and outreach to assist school districts in developing labor compliance programs, and developing labor compliance program templates that could be adopted by districts to quicken the approval process. Mr. Lujan also indicated that DIR would look at ways of easing the ability of districts to contract with other school districts or county offices for the provision of labor compliance programs. However, there was some confusion on responsibility for enforcing school district labor compliance programs.


The SAB directed staff to work with DIR, school district organizations such as C.A.S.H., contractors and other interested parties in developing procedures, workbooks

and information that would best assist school districts to meet labor compliance without delays in school construction projects. DIR is directed to report back to the SAB each month on progress and how well school district compliance programs are being adopted. The Board also expects a labor compliance model program to be developed by a workgroup for use by all districts.

### Use of Grants:

The SAB did not take action to approve the staff recommendation for very restricted ability to use more grants than those that would be generated by the number of classrooms proposed to be constructed. Instead, the Board grandfathered all school districts that had submitted plans to DSA by January 1, 2003 under the current policy. However, the projects would be limited to no more than 135% use of grants and would have to develop housing plans that did not include placing students on multi-track year-round.

Staff was directed to work with the Implementation Committee to develop a new policy on use of grants for all projects submitted to DSA after January 1, 2003 and that policy be retroactive to such projects filed after January 1. Because no projects after January 1, 2003 would be approved by the SAB until the new policy is adopted, there is significant pressure on all parties to reach agreement as soon as possible.

C.A.S.H. advocate Tom Duffy represented C.A.S.H. on both of these issues and was instrumental in having SAB action that allows school districts more flexibility than proposed by state staff. 

– Dave Walrath

# K-12 and Community Colleges Confer on Building Educational Facilities


Over 250 K-12 and community college professionals came together in La Jolla to learn about building educational facilities. This event was co-sponsored by the Coalition for Adequate School Housing (C.A.S.H.) and the Community College Facility Coalition (CCFC).

This comprehensive program covered topics related to building educational facilities both in the K-12 and community college arenas. On the first day of the conference, attendees sat in a general session and heard from K-12 and community college experts on topics such as Early Planning; Assembling a Team, and Construction.

The second day attendees broke into two sessions. Expert presenters in each session covered K-12 and community college specific issues on obtaining funds and project approvals.

Comments from attendees were very positive. They especially liked the breakout of the two sessions, which detailed the different ways that you obtain funding both in K-12 and community colleges.

This is the second successful collaborative effort between C.A.S.H. and CCFC.

Thank you to all of the presenters who helped to make this event a success!  - Greg Golik



*(l to r) Jeff Baratta, Stone & Youngberg LLP, Richard Nowicki, NTD Architects, Tony Ward, MWH, Mark Reinmiller, Vanir Construction Management*



*(l to r) Michael O'Neill, California Department of Education/School Facilities Planning Division, Linda Sweaney, San Bernardino Superintendent of Schools, Matthew Pettler, School Facility Consultants*



*Lori Morgan, Office of Public School Construction, Peter Garcia, Department of Toxic Substances Control*



*(l to r) Susan Yeager, California Community Colleges Chancellor's Office, Gin Yang-Staehlin, California Community Colleges Chancellor's Office, Chris Addington, The Addington Partnership*

*Continued on page 13*



# *Carrillo Elementary School* at San Marcos USD

**Architect: NTD Architects**

The Carrillo Ranch Park borders this scenic 6 acre site along the south of the property providing potential for outdoor learning as well as views and privacy. The community system of trails and open spaces is contiguous to the site, providing for additional opportunities for outdoor learning and good community access. Classrooms are arranged along covered arcades or walkways reminiscent of early California Rancho architecture. Each classroom has access to a central shared commons area designed to promote collaboration among staff and students and provide flexible learning opportunities.


The Carrillo Elementary School library is nestled in a quiet courtyard overlooking the Historic Park and enjoys views across the neighboring

canyon and park. Outdoor reading areas adjacent to the Library provide a variety of teaching opportunities and a relaxing calm atmosphere for the children. Positioned at the front of the campus is the multipurpose facility which houses the food service facilities and a covered lunch shelter just outside the side entrance. Facing the courtyard are large doors that provide for exterior expansion into the school's main central courtyard space. The natural rock and forms used in the landscaping provide a natural seating experience as well as an attractive entry for visitors to the school.

Exterior forms and materials have been chosen for the architecture to compliment and blend with the existing architecture of the historic Carrillo Ranch Park. Although several different

architectural styles influenced Leo Carrillo in the development of his ranch, this area once was home to a style more reminiscent of Santa Fe



architecture that was chosen. In keeping with the ideas prevalent in early rancho architecture, tile covered walkways are used extensively to provide scale to the buildings and protection from inclement weather. Masonry materials also respond to issues of low maintenance and long life. Large boulders are used in the site extensively to complement the indigenous plantings, as well as to enhance the natural setting, protect plantings from foot traffic, and avoid maintenance problems caused by skateboarders. 



# C.A.S.H. 24<sup>th</sup> Annual Conference on School Facilities

February 24 - 27, 2003

Sacramento Convention Center/Hyatt Regency Hotel

## CONFERENCE REGISTRATION FORM

NAME: \_\_\_\_\_ TITLE: \_\_\_\_\_

(As you want it to appear on your name badge.) Note: For additional registrations, please copy this form.

DISTRICT/COMPANY: \_\_\_\_\_

(As you want it to appear on your name badge)

ADDRESS: \_\_\_\_\_

CITY: \_\_\_\_\_ STATE: \_\_\_\_\_ ZIP: \_\_\_\_\_

PHONE: \_\_\_\_\_ FAX: \_\_\_\_\_ EMAIL: \_\_\_\_\_

EMERGENCY CONTACT: \_\_\_\_\_ EMERGENCY PHONE #: \_\_\_\_\_

### 2003 Annual Conference Registration Fees

#### On or before February 3

Full conference registration fees:

Member ..... \$715\*

Non-Member ..... \$815

One day conference registration fees:

Member ..... \$380\*

Non-Member ..... \$480

#### After February 3 or at the door

Full conference registration fees:

Member ..... \$815\*

Non-Member ..... \$915

One day conference registration fees:

Member ..... \$480\*

Non-Member ..... \$580

Registration Fee \$ \_\_\_\_\_

School Tour Fee (\$75) \$ \_\_\_\_\_

Total \$ \_\_\_\_\_

One day attendees, please indicate  
which day you will attend:  
\_\_\_\_\_

Check here if this is your first time attending

Check here if you request vegetarian meals

\* C.A.S.H. Membership is by school district, county office, or company; not by individual. Any employee of a member school district, county office or company may attend at the member rate.

### Cancellation Policy

- Before February 3 ..... Full Refund
- Between February 3 - February 12 ..... \$100 Fee
- After February 12 ..... No Refund

Cancellation must be written and faxed to (916) 448-7495 or mailed to C.A.S.H. Annual Conference Cancellations, 1130 K Street, Suite 210, Sacramento, CA 95814. You may also email your cancellation to [ltaber@m-w-h.com](mailto:ltaber@m-w-h.com)

Purchase Order # \_\_\_\_\_ Check # \_\_\_\_\_  Visa  MasterCard  American Express

Card # \_\_\_\_\_ Exp. Date \_\_\_\_\_ Signature \_\_\_\_\_

Please print name as it appears on card: \_\_\_\_\_  Please email my credit card receipt

Please mail or fax registration and payment (check, Visa, MasterCard, American Express or purchase orders acceptable) to: C.A.S.H. 24<sup>th</sup> Annual Conference, 1130 K Street, Suite 210, Sacramento, CA 95814. Fax: (916) 448-7495

Questions? Call the C.A.S.H. office at (916) 448-8577.

register online at:  
[cashnet.org](http://cashnet.org)

Please complete the form on the back to indicate workshops  
you may be attending.



CALIFORNIA'S  
COALITION  
for ADEQUATE  
SCHOOL HOUSING\*

**K-12 and Community Colleges Confer on Building Educational Facilities**

*Continued from page 10*



*(l to r) Ted Rozzi, Corona Norco USD, Stephanie Dovichi, Pacific Program Management, Peggy Strand, Best Best & Krieger LLP, Steve Pellegren, C.W. Driver Contractors*



*(l to r) Frank Harris, West Hill Community College District, Roland "Bud" Allen, Community College Services Group, Fred Harris, California Community Colleges Chancellor's Office*

**JSA Jack Schreder & Associates**

*Governmental Relations Consultants*

*"Planning for the Future of California's Public Schools"*

- ✓ **School Facility Program**  
Construction & Modernization Facilitation  
School Facility Program Eligibility Reports  
Audit & Close-Out Assistance
- ✓ **CDE Class Size Reduction Program**
- ✓ **Facility Planning & Demographics**  
Developer Fee Justification Studies  
& Implementation  
Facility Master Plans, Student Yield Studies  
Enrollment Projections  
Year Round Analysis and Studies
- ✓ **Facility Needs Analysis (Level 2 & 3 Fees)**
- ✓ **Local Facility Funding Options**

<i>Jack Schreder</i>	<i>Elona Cunningham</i>
<i>Kristen Schreder</i>	<i>Tom Fehr</i>
<i>Cheryl King</i>	<i>Tamara Caspar</i>
<i>Robin Goldsworthy</i>	<i>Lisa Avalos</i>
<i>Kaisaundra Nootenboom</i>	

2230 K Street  
Sacramento, CA 95816

(916) 441-0986  
FAX 441-3048

***Thanks to the following businesses who sponsored the Tuesday night reception:***

- Best Best & Krieger LLP
- Bill Gould Design-Art & Architecture
- Bovis Lend Lease
- C.W. Driver Contractors
- Construction Testing & Engineering Inc.
- FL Construction Management
- Pacific Coast Building Products
- Pacific Relocation Consultants/Cutler & Assoc.
- Spectrum Communications
- Stone & Youngberg LLC
- Williams Scotsman

***BERNARDS BROS.  
1/2 PAGE AD  
PICK UP FROM LAST ISSUE***

***AALR  
1/2 PAGE AD  
PICK UP FROM LAST ISSUE***

***MEEHLEIS MODULAR  
FULL PAGE AD  
PICK UP FROM LAST ISSUE***

**DMSI**  
**1/4 PAGE AD**  
**P/U FROM LAST ISSUE**

*"Our progress as a nation can be no swifter than our progress in education."*

— John F Kennedy

Progressive educational spaces since 1909



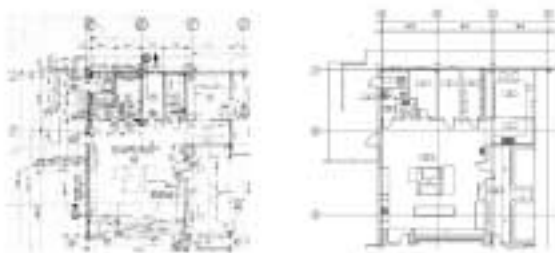
Lionakis Beaumont Design Group Inc.  
 Architecture • Planning  
 Engineering • Interiors  
[www.LBDG.com](http://www.LBDG.com)

# CAD Drawings

RE-DRAWN FROM YOUR EXISTING BLUEPRINTS

1, 2, 3-Week Turnaround

**Same Low Price Per School**



Coordinated & Dimensionally Accurate

Immediate Price Quote:

**510.832.7209**

[usvitsky@earthlink.net](mailto:usvitsky@earthlink.net)

**DataGraphics**

360 Grand Avenue, #233, Oakland, CA 94610

•CEQA/NEPA Compliance

•Mitigation Monitoring

•Safety Assessments

•Technical Studies

• Facility Master Plans

•GIS/GPS Mapping

•School Site Selection & Feasibility Studies



The Planning Center publishes CenterViews, a newsletter for school officials. CenterViews provides analyses of the latest environmental and planning issues concerning California schools. Copies may be downloaded from our website:

[www.schoolplanning.com](http://www.schoolplanning.com)



1580 Metro Drive - Costa Mesa, CA - 92626 - 714.966.9220

# BLACH DELIVERS...

*"The partnership between Blach Construction and the Oak Grove School District has produced a construction and project delivery model that identifies superior vendors/contractors and produces a product of the highest quality, on time and on budget."*

**Doug Calvin, Director of Modernization  
Oak Grove School District**

*"...having the Blach team here made my life easy — they handled all details, kept us informed and got the job done! While you always think there's room for improvement, not so here. Everything was perfect..."*

**Antonia (Toni) Imbimbo, Business Manager  
Woodside School District**

Blach Construction Company prides itself in the delivery of timely and quality construction through collaborative teamwork and communication. Our approach provides solid leadership, trust with stakeholders and continuously fosters a collaborative spirit.

We offer construction professionals who actively listen, effectively communicate, gain consensus and provide continual guidance from initial project conception through design, construction and ultimately to building occupancy and closeout.

Blach Construction...the builder with a 32-year record of delivering unparalleled client service, innovation and value.

**Good guys. Great builders.™**



Phone: (408) 244-7100  
[www.blach.com](http://www.blach.com)

CA Contractor's License 290418



**GEARY PACIFIC  
1/2 PAGE AD  
P/U FROM LAST ISSUE**

# Invest in Success...

Building our communities  
project by project.

Professional Construction Management

www.pacificpm.com  
toll free 877-928-9600



**SHADE STRUCTURES**  
**1/4 PAGE AD**  
**P/U FROM LAST ISSUE**

## Is your project over budget? Don't cut it! Call **TurnKey!**

Your **architect**

Your **design**

Within **budget**

Accelerated **schedules**

Classroom buildings, **1-3 stories**

**Guaranteed!**



Offices in Temecula, Santa Maria, Fresno and Dublin • [www.turnkeyschools.com](http://www.turnkeyschools.com) • 909-639-0400

**ATI**  
**1/4 PAGE AD**  
**PICK UP FROM LAST ISSUE**



Your legal  
resource  
in building  
the best  
learning  
environment  
for the  
current  
generation...  
and beyond.

**OFFICES:**

Suite 575  
1901 Avenue of the Stars  
Los Angeles, CA 90067

310 788-9200 (PHONE)  
310 788-9210 (FAX)

Suite 600  
1300 Clay Street  
Oakland, CA 94612

510 446-7774 (PHONE)  
510 464-8001 (FAX)

[info@orbachhuff.com](mailto:info@orbachhuff.com)

**ORBACH + HUFF LLP**

**VANIR**  
**1/2 PAGE AD**  
**PICK UP FROM LAST ISSUE**

School Planning Assistance

Site Selection and Constraints Analysis

CEQA/NEPA Documents

Technical Studies

Site Approval Process

Local Agency and California  
Department of Education Coordination

Permits and Regulatory Compliance

[www.esassoc.com](http://www.esassoc.com)

San Francisco Sacramento Oakland Los Angeles



**JONES HALL**  
**1/4 PAGE AD**  
**PICK UP FROM LAST ISSUE**



# ENVIROPLEX, INC.

4777 E. CARPENTER ROAD  
FAX (209) 461-6555

STOCKTON, CA 95215  
(866) 466-8001

MANUFACTURERS OF DSA-APPROVED RIGID STEELFRAME MODULAR SCHOOL FACILITIES

## Complete School Projects:

- Classrooms
- Restrooms
- Science Labs
- Admin Offices



- Libraries
- Cafeterias
- Daycares
- Computer Labs



*“Piggyback Contracts”*

[www.enviroplexinc.com](http://www.enviroplexinc.com)





As if we didn't already make  
the mobile modular building process  
as easy as apple pie.

THE COMPANY THAT HAS BEEN BRINGING YOU QUALITY CLASSROOMS FOR RENT,  
LEASE OR PURCHASE SINCE 1979 NOW DELIVERS ONLINE CONVENIENCE.

#### Quality Service

- Large inventory selection
- Immediate delivery
- Piggyback bid programs
- Qualified technicians to service your building
- Project managers who are expert with DSA regulation and code requirements
- Buildings customized to your specific needs

#### Online Convenience

- Ability to keep track of your buildings on lease
- View floor plans and photos of modular buildings
- Select buildings from available inventory
- Request a quote online
- Schedule return or relocation service
- Request repair or modification service
- Access to your account balances and invoices
- View your history of open quotations and service requests



MOBILE  
MODULAR

888-846-7220

NORTHERN CALIFORNIA | 5700 Las Positas Road | Livermore, CA 94550 | [sfinfo@mobilemodularrents.com](mailto:sfinfo@mobilemodularrents.com)  
SOUTHERN CALIFORNIA | 11450 Mission Blvd. | Mira Loma, CA 91752 | [lainfo@mobilemodularrents.com](mailto:lainfo@mobilemodularrents.com)

Think [MobileModularRents.com](http://MobileModularRents.com) !!

## C.A.S.H. MONTHLY MEETING MINUTES

– January 22, 2003 –

C.A.S.H. Chair Kathleen Moore Baratta called the meeting to order at 11:00 a.m. New members and guests were introduced and welcomed.

Kathleen briefly highlighted the actions of the Board and staff over the last month.

### **LEGISLATIVE REPORT - Tom Duffy**

Tom reviewed the three programs that have gone into effect since the passage of AB 16; Critically Overcrowded Schools, Joint-Use Program, and the new Charter Program.

Tom discussed AB 1506. The SAB wants the Department of Industrial Relations (DIR) to be involved with certifying districts are paying prevailing wage. C.A.S.H. is suggesting that a model program be used throughout the state for consistency.

Tom also discussed the topic of Use of Grants. C.A.S.H. would like the SAB to re-adopt the 35% overage on grants and also postpone any other actions on grants.

### **2004 BOND CAMPAIGN UPDATE - Dave Doomey**

Dave thanked the current contributors to the 2004 bond campaign. There were some residual funds left from the Proposition 47 campaign that have been used to kick start the 2004 campaign. The C.A.S.H. Board has also made contributions to the campaign. The fundraising committee will be meeting soon to coordinate efforts for 2004.

### **STORMWATER MANAGEMENT - Ian Padilla**

Ian reported that the stormwater regulations have been revised to allow districts to not have to redesign any plans that have already been submitted through December 31, 2004. Comments can be directed to Jarma Bennett at the State Water Resources Board (916) 341-5532 341-5543 fax or by email at stormwater@swrcb.ca.gov.

### **ARCHITECTS COMMITTEE - Dennis Dunston**

Dennis noted the next committee meeting would be during the Annual Conference on Tuesday, February 25 from 9:00 a.m. - 11:00 a.m. Any suggested topics can be directed to Dennis.

C.A.S.H. has been contacted by the Earthquake Engineering Research Institute to put together workshops concerning seismic safety. More information will be available soon.

### **ANNUAL CONFERENCE PLANNING COMMITTEE - Eric J. Hall**

Eric noted that the conference planning is going along smoothly. There have been 30 district cancellations, but Eric reminded districts of the importance of the conference and the information available. Eric briefly discussed some of the highlights of the conference.

### **CAL-FED - Emily Stone**

Emily discussed the 2003 QZAB allocations. The application process should be available from CDE soon. The next meeting of CAL-FED is scheduled during the C.A.S.H. Annual Conference. April 28 - 30 is the Spring trip to Washington DC.

### **CALIFORNIA DEPARTMENT OF EDUCATION - Jim Bush**

Jim noted that a new roster of field consultants and a map of their territories are now available. Jim welcomed two new staff members. CDE is working on a process to help Charter schools apply for funds. More information will be available in early February.

### **DEPARTMENT OF TOXIC SUBSTANCE CONTROL - Hamid Saebfar**

Hamid discussed special grants that are available to districts that are interested in sites that may have some environmental cloud over them. DTSC is trying to develop an advisory committee to deal with the issue of PCB's in lighting ballast in classrooms. DTSC will get information out to the district on the proper retrofitting process. This will be a voluntary program. The Office of Environmental Health Hazardous Assessment (OEHHA) is developing school specific exposure legislation. A draft guidance document will soon be available from them.

### **DIVISION OF THE STATE ARCHITECT UPDATE - Dan Levernier**

DSA now has consulting firms available for energy reviews for funds available from Proposition 47. More information is available on the DSA website. A survey is going out to districts asking for upcoming workload issues.

### **OFFICE OF PUBLIC SCHOOL CONSTRUCTION/STATE ALLOCATION BOARD - Sue Reese & Lori Morgan**

Sue Reese and Lori Morgan discussed the current agenda.

OPSC will be sending out updates to districts on their remaining eligibility and make themselves available to the districts to answer questions and help fill out forms is necessary.

A draft labor compliance guideline was put together by a working group with Implementation Committee members and DIR representatives. DIR will be releasing the guidelines soon.

The Implementation Committee meetings will be held in Sacramento until further notice. The schedule will be reevaluated in six months.

Dave Doomey thanked Kathleen Moore Baratta for her leadership over the last two years during the major transitions that have occurred recently.

The meeting was adjourned at 12:10 p.m.

## C.A.S.H. Leadership

### **OFFICERS**

Kathleen Moore Baratta, Chair  
Elk Grove USD  
(916) 686-7797 • (916) 686-7754 fax

Eric J. Hall, Vice Chair  
San Dieguito Un. HSD  
(760) 943-3518 • (760) 943-3508 fax

Carl Thorsted, Treasurer  
(707) 864-1164 • (707) 864-2394 fax

### **DIRECTORS**

Jeffrey Baratta  
Stone & Youngberg LLC  
(415) 445-2337 • (415) 445-2395 fax

Ron Bennett  
School Services of California  
(916) 446-7517 • (916) 446-2011 fax

Lettie Boggs  
Anaheim City SD  
(714) 517-7549 • (714) 517-8768

Dennis Dunston  
HMC Group  
(916) 649-3201 • (916) 923-3386 fax

Sherry Gongaware  
Tracy USD  
(209) 831-5032 • (209) 831-5567 fax

Stephanie Gonos  
San Juan USD  
(916) 971-5781 • (916) 971-5799 fax

Pamela T. Johnson  
Montebello USD  
(323) 887-3194 • (323) 887-3177 fax

Gary Mekeel  
Burton SD  
(559) 781-8020 • (559) 781-1403 fax

Ted Rozzi  
Corona-Norco USD  
(909) 736-5045 • (909) 736-5047 fax

Linda M. Sweaney  
San Bernardino Co. Supt. of Schools  
(909) 433-4741 • (909) 433-4806 fax

Arturo Taboada  
Turner Construction Company  
(510) 267-8184 • (510) 267-0787 fax

### **LEGAL ADVISOR**

Stephen L. Hartsell  
School and College Legal Service, of California  
(707) 441-3997 • (707) 445-9132 fax

### **EVENTS COORDINATOR**

Ron Pregmon  
WLC Architects Inc.  
(909) 987-0909 • (909) 980-9980 fax

### **IMMEDIATE PAST CHAIR**

Dave Doomey, Immediate Past Chair (99-00)  
Capistrano USD  
(949) 489-7264 • (949) 248-8546 fax

# C.A.S.H. Meetings, Conferences & Workshops

<b>February 24, 2003</b> Monday	<b>C.A.S.H. Annual Conference Golf Tournament</b> Woodcreek Golf Course, Roseville, CA
<b>February 25-27, 2003</b> Tuesday – Thursday	<b>C.A.S.H. 24<sup>th</sup> Annual Conference</b> Sacramento Convention Center/ Hyatt Regency Hotel, Sacramento, CA
<b>March 25, 2003</b> Tuesday	<b>Prequalification of Bidders (am) and Bidding Procedures (pm) Workshops</b> Doubletree Hotel 2001 Point West Way, Sacramento, CA
<b>March 26, 2003</b> Wednesday	<b>C.A.S.H. General Membership Meeting</b> California Chamber of Commerce 1215 K Street 14 <sup>th</sup> Floor, Sacramento, CA 95814
<b>March 28, 2003</b> Friday	<b>Prequalification of Bidders (am) and Bidding Procedures (pm) Workshops</b> Ontario Airport Marriott 2200 E. Holt Blvd., Ontario, CA
<b>May 14, 2003</b> Wednesday	<b>Workshop TBD</b> Westin Horton Plaza 910 Broadway Circle, San Diego, CA
<b>May 15-16, 2003</b> Thursday- Friday	<b>C.A.S.H. Spring</b> Wyndham Emerald Plaza 400 West Broadway, San Diego, CA

***Monthly C.A.S.H. meetings are held from 11:00 a.m. to Noon in Sacramento. The monthly meetings are always scheduled to coincide with the monthly meetings of the State Allocation Board on the fourth Wednesday of the month, except in November and December, to enable C.A.S.H. members to attend the SAB's afternoon session. Both SAB meetings and General membership meetings are subject to change.***



CALIFORNIA'S  
COALITION  
*for* ADEQUATE  
SCHOOL HOUSING<sup>SM</sup>

c/o Murdoch, Walrath & Holmes  
1130 K Street, Suite 210  
Sacramento, CA 95814

PRESORTED  
FIRST CLASS  
U.S. POSTAGE  
P A I D  
SACRAMENTO, CA  
PERMIT #2840

**POSTMASTER – TIME VALUE  
PLEASE DELIVER PROMPTLY**